

# bosal

## Инструкция по монтажу тягово-сцепного устройства шарового типа 3309 А для автомобилей **Lifan Solano**

	...-2010
	1200
	60
	14



462800,

« - »

18

∴ (35363) 7-05-06

/ : (35363) 7-13-20

(495) 785-66-07

[www.bosal-autoflex.ru](http://www.bosal-autoflex.ru)

« - »	(8182) 22-48-15
"	" 8(8442) 98-74-98
"	" 8(343) 379-39-89, 373-42-73
"	" 8(343) 26-88-308
"	" 8(3952) 710-194
"	" 8(495) 777-54-59
"	" 8(495) 745-79-11
"	" 8(495) 788-95-97
"	" 8(495) 720-51-03
"	" 8(3532) 57-99-85
"	" 8-905-899-5012
"	" 8(383) 291-59-60
"	" 8(831) 279-53-24
"	" 8(3422) 98-27-20
"	" 8(342) 220-87-87
"	" 8-927-002-90-06
"	" 8(3462) 24-00-44
"	" 8(3842) 21-14-76
"	" 8-902-940-4151
"	" 8(3452) 32-22-12, 41-52-62
"	" 8-961-213-0278
"	" 8-917-347-1700
"	" 8(351) 269-44-75, 900-72-73
"	" 8(3512) 773-76-91

41.55-2005.

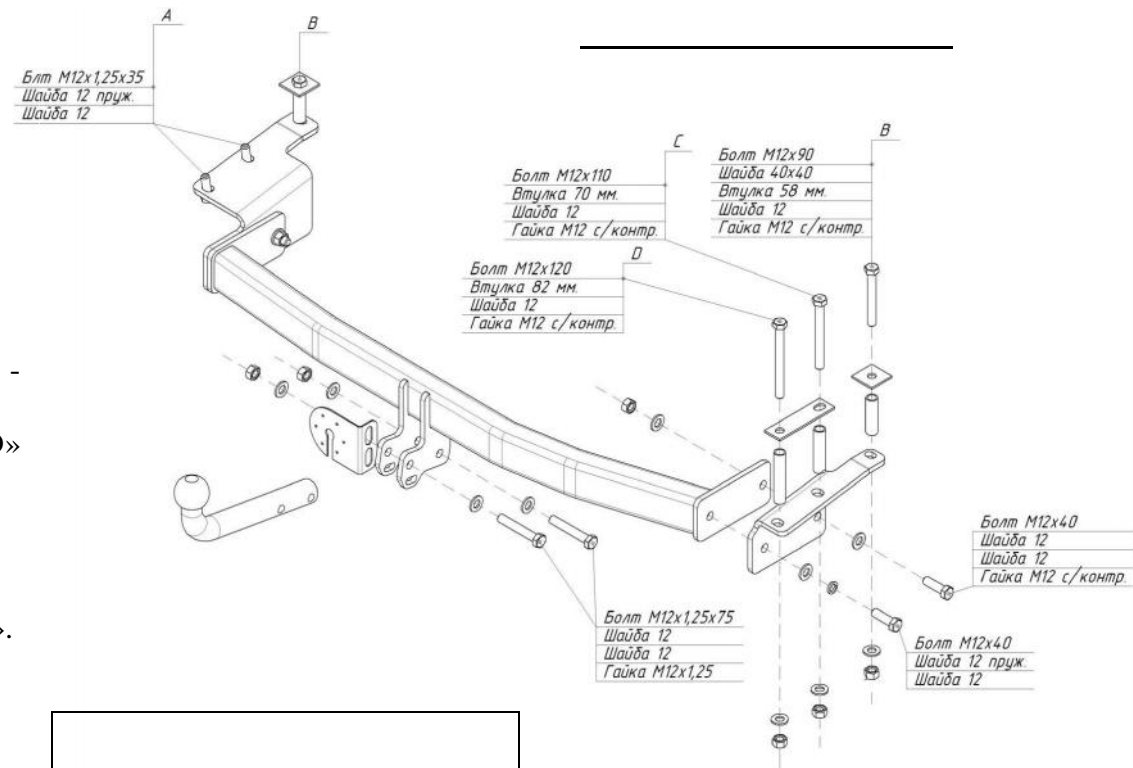
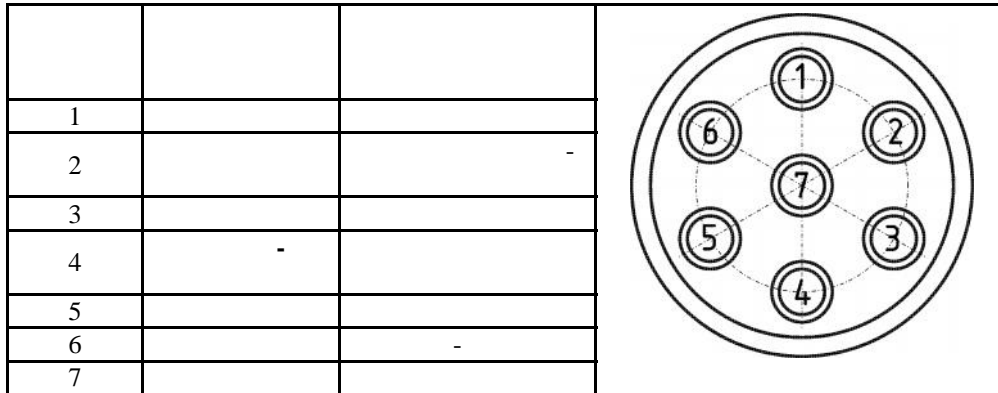
d13 « » «D»

18 ..

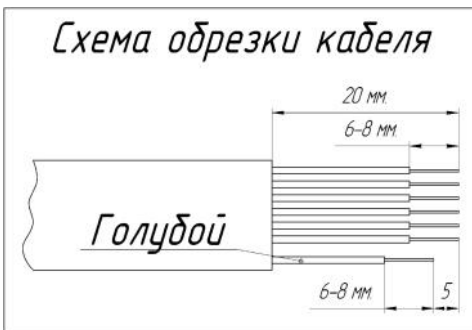
D13 . « ».

18 .

. « ».



	1
	1
	1
	1
	1



VH0173	1
40 40	2
	1
	1

4	3
4	3
4	3
4 35	3
12 1,25 35	2
12 40	4
12 1,25 75	2
12 90	2
12 110	1
12 120	1
12 /	6
12 1,25 /	2
12	4
12	16
58	2
70	1
82	1
	1
	1
190	1
	1